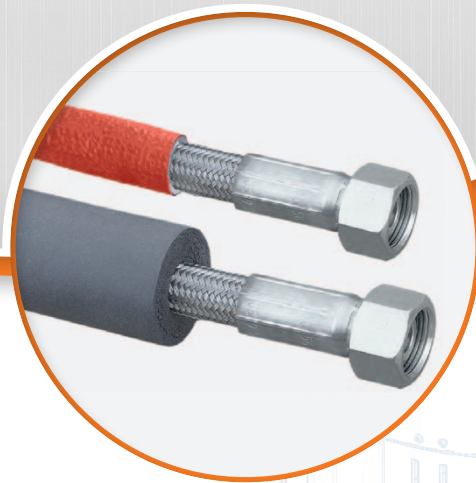


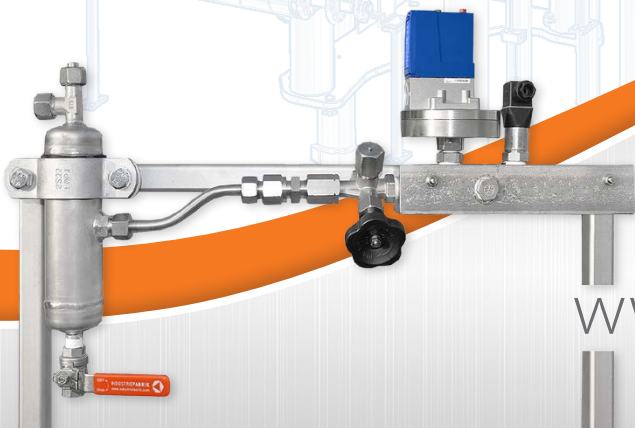
# Steam hoses with thermal insulation

**INDUSTRIEFABRIK**  
VALVES . FITTINGS . PLANTS . STRAINERS



**Industriefabrik Schneider**

Manufacturer of  
**PTFE Steam hoses  
with thermal insulation**



[www.industriefabrik.com](http://www.industriefabrik.com)

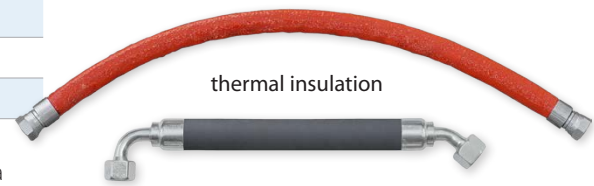
# IFS 2030T – PTFE Steam hoses

- » **Main features:** suitable for high temperatures, Inert to virtually all hydraulic and chemical fluids
- » **Applications:** medium steam or pressure service for use with hydraulic fluids at high temperatures and aggressive chemicals in the chemical industry, surface engineering, 2-component systems. The core tube material conforms to FDA 21 CFR177.1550.
- » **Optional:** different insulation variants to save energy and reduce the room temperature; different connections; hose protection spiral; overall length according to customer requirements

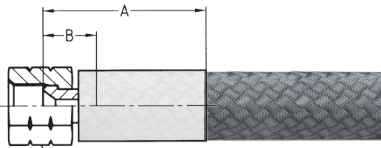


## Smooth hose V70

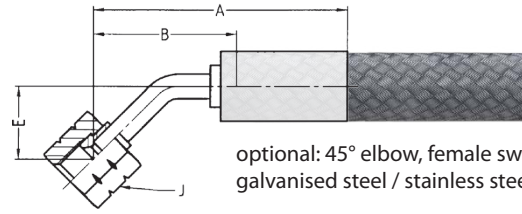
<b>N. diameter:</b>	DN5 ... DN25; Size: -03 ... -16
<b>Core tube:</b>	Polytetrafluoroethylene
<b>Pressure reinforcement:</b>	one braided layer of stainless steel wire
<b>Temperature range:</b>	-50 °C ... +150 °C permanent temperature, +230 °C at working pressures up to 2 MPa



Order number	Nominal diameter $\odot$				outer diameter [mm] $\odot$	Max. working pressure		Min. burst pressure		Min. bend radius [mm]	Product feature
	DN	size	[mm]	[inch]		[MPa]	[psi]	[MPa]	[psi]		
IFS-2030T-03V70	5	-3	4,7	3/16	7,8	27,5	3985	110	15950	50	(*1)
IFS-2030T-03V70-CTP	5	-3	4,7	3/16	27,8	27,5	3985	110	15950	50	(*2)
IFS-2030T-03V70-CTP-B	5	-3	4,7	3/16	27,8	27,5	3985	110	15950	50	(*3)
IFS-2030T-03V70-FS	5	-3	4,7	3/16	7,8	27,5	3985	110	15950	50	(*4)
IFS-2030T-04V70	6	-4	6,3	1/4	9,5	24	3480	96	13920	75	(*1)
IFS-2030T-04V70-CTP	6	-4	6,3	1/4	29,5	24	3480	96	13920	75	(*2)
IFS-2030T-04V70-CTM-B	6	-4	6,3	1/4	29,5	24	3480	96	13920	75	(*3)
IFS-2030T-04V70-FS	6	-4	6,3	1/4	9,5	24	3480	96	13920	75	(*4)
IFS-2030T-05V70	8	-5	8,2	5/16	11,5	20	2900	80	11600	100	(*1)
IFS-2030T-05V70-CTP	8	-5	8,2	5/16	31,5	20	2900	80	11600	100	(*2)
IFS-2030T-05V70-CTP-B	8	-5	8,2	5/16	31,5	20	2900	80	11600	100	(*3)
IFS-2030T-05V70-FS	8	-5	8,2	5/16	11,5	20	2900	80	11600	100	(*4)
IFS-2030T-06V70	10	-6	9,7	3/8	13	17,5	2535	70	10150	120	(*1)
IFS-2030T-06V70-CTP	10	-6	9,7	3/8	33	17,5	2535	70	10150	120	(*2)
IFS-2030T-06V70-CTP-B	10	-6	9,7	3/8	33	17,5	2535	70	10150	120	(*3)
IFS-2030T-06V70-FS	10	-6	9,7	3/8	13	17,5	2535	70	10150	120	(*4)
IFS-2030T-08V70	12	-8	12,8	1/2	16,7	15	2175	60	8700	135	(*1)
IFS-2030T-08V70-CTP	12	-8	12,8	1/2	36,7	15	2175	60	8700	135	(*2)
IFS-2030T-08V70-CTP-B	12	-8	12,8	1/2	36,7	15	2175	60	8700	135	(*3)
IFS-2030T-08V70-FS	12	-8	12,8	1/2	16,7	15	2175	60	8700	135	(*4)
IFS-2030T-10V70	16	-10	16	5/8	20	12,5	1810	50	7250	160	(*1)
IFS-2030T-10V70-CTP	16	-10	16	5/8	40	12,5	1810	50	7250	160	(*2)
IFS-2030T-10V70-CTP-B	16	-10	16	5/8	40	12,5	1810	50	7250	160	(*3)
IFS-2030T-10V70-FS	16	-10	16	5/8	20	12,5	1810	50	7250	160	(*4)
IFS-2030T-12V70	20	-12	19,4	3/4	23,5	10	1450	40	5800	200	(*1)
IFS-2030T-12V70-CTP	20	-12	19,4	3/4	43,5	10	1450	40	5800	200	(*2)
IFS-2030T-12V70-CTP-B	20	-12	19,4	3/4	43,5	10	1450	40	5800	200	(*3)
IFS-2030T-12V70-FS	20	-12	19,4	3/4	23,5	10	1450	40	5800	200	(*4)
IFS-2030T-16V70	25	-16	25	1	29	8	1160	32	4640	250	(*1)
IFS-2030T-16V70-CTP	25	-16	25	1	49	8	1160	32	4640	250	(*2)
IFS-2030T-16V70-CTP-B	25	-16	25	1	49	8	1160	32	4640	250	(*3)
IFS-2030T-16V70-FS	25	-16	25	1	29	8	1160	32	4640	250	(*4)



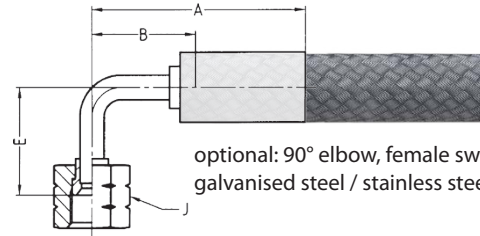
Standard connection type: UNF, conical inner thread, galvanised steel



optional: 45° elbow, female swivel, galvanised steel / stainless steel



optional: UNF, male thread, galvanised steel / stainless steel



optional: 90° elbow, female swivel, galvanised steel / stainless steel

## Convolute hose CON

**N. diameter:** DN6 ... DN32; Size: -04 ... -20

**Core tube:** Polytetrafluoroethylene

**Pressure reinforcement:** one braided layer of stainless steel wire

**Temperature range:** -70 °C ... +230 °C



optional:  
hose abrasion  
protection spiral

Order number	Nominal diameter $\odot$				outer diameter [mm] $\odot$	Max. working pressure		Min. burst pressure		Min. bend radius [mm]	Product feature
	DN	size	[mm]	[inch]		[MPa]	[psi]	[MPa]	[psi]		
IFS-2030T-04CON	6	-4	6,4	1/4	9,9	17,2	2500	68,8	10000	18	(*1)
IFS-2030T-04CON-CTP	6	-4	6,4	1/4	29,9	17,2	2500	68,8	10000	18	(*2)
IFS-2030T-04CON-CTP-B	6	-4	6,4	1/4	29,9	17,2	2500	68,8	10000	18	(*3)
IFS-2030T-04CON-FS	6	-4	6,4	1/4	9,9	17,2	2500	68,8	10000	18	(*4)
IFS-2030T-05CON	8	-5	8,2	5/16	12,9	15,5	2250	62	9000	25	(*1)
IFS-2030T-05CON-CTP	8	-5	8,2	5/16	32,9	15,5	2250	62	9000	25	(*2)
IFS-2030T-05CON-CTP-B	8	-5	8,2	5/16	32,9	15,5	2250	62	9000	25	(*3)
IFS-2030T-05CON-FS	8	-5	8,2	5/16	12,9	15,5	2250	62	9000	25	(*4)
IFS-2030T-06CON	10	-6	9,9	3/8	14,5	13,8	2000	55,2	8000	30	(*1)
IFS-2030T-06CON-CTP	10	-6	9,9	3/8	34,5	13,8	2000	55,2	8000	30	(*2)
IFS-2030T-06CON-CTP-B	10	-6	9,9	3/8	34,5	13,8	2000	55,2	8000	30	(*3)
IFS-2030T-06CON-FS	10	-6	9,9	3/8	14,5	13,8	2000	55,2	8000	30	(*4)
IFS-2030T-08CON	12	-8	12,8	1/2	18,5	10,3	1500	41,2	6000	40	(*1)
IFS-2030T-08CON-CTP	12	-8	12,8	1/2	38,5	10,3	1500	41,2	6000	40	(*2)
IFS-2030T-08CON-CTP-B	12	-8	12,8	1/2	38,5	10,3	1500	41,2	6000	40	(*3)
IFS-2030T-08CON-FS	12	-8	12,8	1/2	18,5	10,3	1500	41,2	6000	40	(*4)
IFS-2030T-10CON	16	-10	16,0	5/8	23,1	8,3	1200	33,2	4800	51	(*1)
IFS-2030T-10CON-CTP	16	-10	16,0	5/8	43,1	8,3	1200	33,2	4800	51	(*2)
IFS-2030T-10CON-CTP-B	16	-10	16,0	5/8	43,1	8,3	1200	33,2	4800	51	(*3)
IFS-2030T-10CON-FS	16	-10	16,0	5/8	23,1	8,3	1200	33,2	4800	51	(*4)
IFS-2030T-12CON	20	-12	19,3	3/4	25,2	6,9	1000	27,6	4000	64	(*1)
IFS-2030T-12CON-CTP	20	-12	19,3	3/4	45,2	6,9	1000	27,6	4000	64	(*2)
IFS-2030T-12CON-CTP-B	20	-12	19,3	3/4	45,2	6,9	1000	27,6	4000	64	(*3)
IFS-2030T-12CON-FS	20	-12	19,3	3/4	25,2	6,9	1000	27,6	4000	64	(*4)
IFS-2030T-16CON	25	-16	25,5	1	33,3	4,6	670	18,4	2680	89	(*1)
IFS-2030T-16CON-CTP	25	-16	25,5	1	53,3	4,6	670	18,4	2680	89	(*2)
IFS-2030T-16CON-CTP-B	25	-16	25,5	1	53,3	4,6	670	18,4	2680	89	(*3)
IFS-2030T-16CON-FS	25	-16	25,5	1	33,3	4,6	670	18,4	2680	89	(*4)
IFS-2030T-20CON	32	-20	32,2	1 1/4	41,5	3,4	490	13,6	19600	125	(*1)
IFS-2030T-20CON-CTP	32	-20	32,2	1 1/4	61,5	3,4	490	13,6	19600	125	(*2)
IFS-2030T-20CON-CTP-B	32	-20	32,2	1 1/4	61,5	3,4	490	13,6	19600	125	(*3)
IFS-2030T-20CON-FS	32	-20	32,2	1 1/4	41,5	3,4	490	13,6	19600	125	(*4)

## Variants of IFS 2030T PTFE Steam hoses

IFS-2030T-XXXXX – **Standard** (\*1)  
one braided layer of stainless steel wire

IFS-2030T-XXXXX-**CTP** (\*2)  
one braided layer of stainless steel wire  
with CTP thermal insulation (10 mm)

IFS-2030T-XXXXX-**CTP-B** (\*3)  
one braided layer of stainless steel wire  
with CTP thermal insulation (Fire class  
B<sub>L</sub>-s1, d0; brand optimized mix, 10 mm)

IFS-2030T-XXXXX-**FS** (\*4)  
one braided layer of stainless steel wire  
with silicon fire sleeve



Complete hoses with fittings of various models and types for purposes using ready-made **Parker Hannifin Corporation** components.



Steamh hose  
with CTP thermal insulation  
(Conti® Thermo Protect)  
**CTP / CTB-B**



Stainless steel corrugated hoses  
with PTFE – **Standard**

Variant with silicon fire sleeve **FS**

### Advantages of PTFE

PTFE (polytetrafluoroethylene) is a high performance fluoroplastic with high crystallinity and high molecular weight, discovered in 1938 by DuPont chemist, Dr. Roy J. Plunkett.

### Unique properties

- » Inert to virtually all chemicals
- » Applicable from -70 °C up to +232 °C (depending on hose type)
- » Minimizes pressure drop and deposits on hose inner surface, easy to clean
- » Convoluted designs have excellent bend radius properties
- » Low tendency to hydrolysis
- » Unlimited shelf life of bulk hose



# INDUSTRIEFABRIK

VALVES . FITTINGS . PLANTS . STRAINERS



Innovative and competent  
Optimal solutions for your success

Spare parts for Industrial plants, fittings and more  
can be found at [order.industriefabrik.com](http://order.industriefabrik.com)

- ❖ Actuator
- ❖ Angle seat valve
- ❖ Ball valve
- ❖ Control valve
- ❖ Insulation
- ❖ Non return valve
- ❖ Pressure switch
- ❖ Pressure transducer
- ❖ Steam traps
- ❖ Sight glass
- ❖ Sediment pot
- ❖ Thermometer
- ❖ and much more



Type 300F



Type 1210



Type 7010



Type Edition 2010



Type HGA 50



Type HSS



Type 8043



Type V2001-IP



Type MK45-2



Cerabar M PMP



Type XML



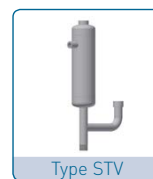
Type RK86



Type IGP10



Type TR10-H



Type STV



Type T8N



## IFS Industriefabrik Schneider GmbH

Rosenweg 3 · 06780 Großzöberitz  
 Phone: +49 (0) 34956 / 3996-0  
 Fax: +49 (0) 34956 / 3996-66  
 E-Mail: [info@industriefabrik.com](mailto:info@industriefabrik.com)  
 Web: [www.industriefabrik.com](http://www.industriefabrik.com)

