

# Steam packages with highest efficiency.

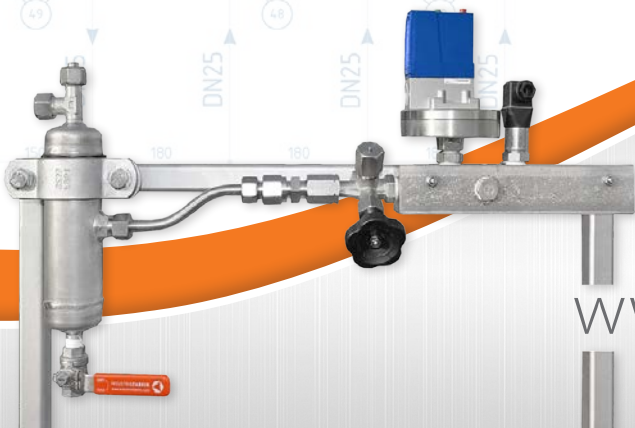
**INDUSTRIEFABRIK**  
VALVES . FITTINGS . PLANTS . STRAINERS



2046

## Industriefabrik Schneider

### Steam packages for tire curing presses

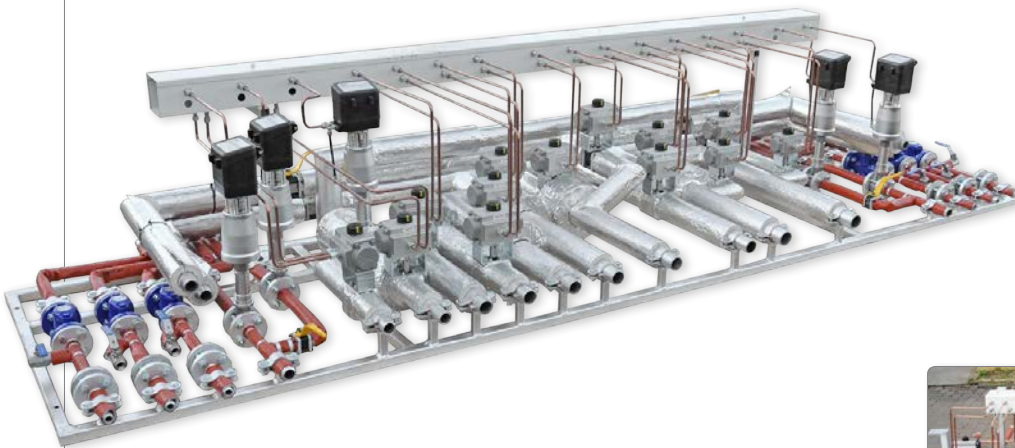


[www.industriefabrik.com](http://www.industriefabrik.com)

## Industrial plants in modular design

Industriefabrik Schneider GmbH is a company in the field of mechanical engineering and construction. We combine first-class industrial services with high-performance construction. In the field of machinery and plant engineering we offer the production of industrial equipment in modular design.

For more than 20 years now, Industriefabrik Schneider GmbH has been developing and manufacturing a variety of reliable, efficient and robust plants at our location in Großzöberitz. Benefit from our experience and know-how in machinery and plant engineering, in particular in the field of steam.



### Skid Mounted Plants from Industriefabrik Schneider

- » Short production time, fast delivery
- » Compact design, low space requirement
- » Simple to transport, easy to install and relocate
- » Minimal maintenance needed, simple exchange of parts
- » Minimized production loss due to short installation period



Steam packages for tire curing presses

# Construction and technical documentation

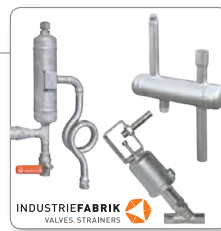
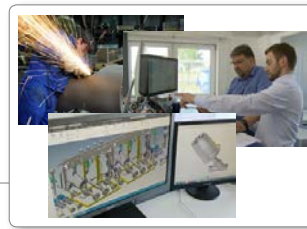
With our in-house design and documentation department, we can support you from the initial idea to the safe operation of the entire plant. Customers trust us in machinery and plant manufacturing with complex unique pieces as well as constructions in series production in larger quantities.



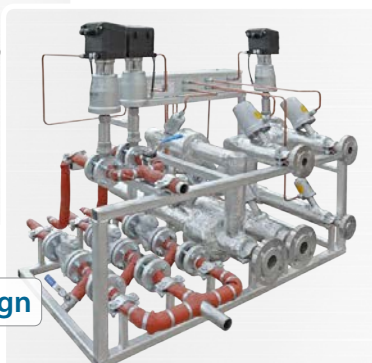
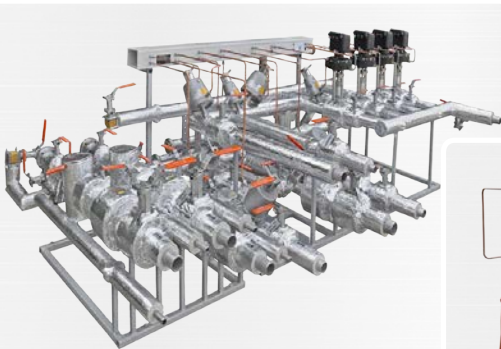
The flexible and modern structure of our company means we can respond satisfactorily to our customers requests and needs. We will be pleased to advise you in detail and develop hand in hand with you innovative customised solutions for your productions plants, workshops and factories.

## Why Steam packages from Industriefabrik?

- » Long time experience in plant engineering with qualified employees
- » In-house construction and documentation department with customer project support
- » Components from its own production
- » Quality valves renowned manufacturers
- » High efficiently temperature design by quality thermal insulation
- » Online shop for industrial fittings and spare parts for your projects



Made in Germany



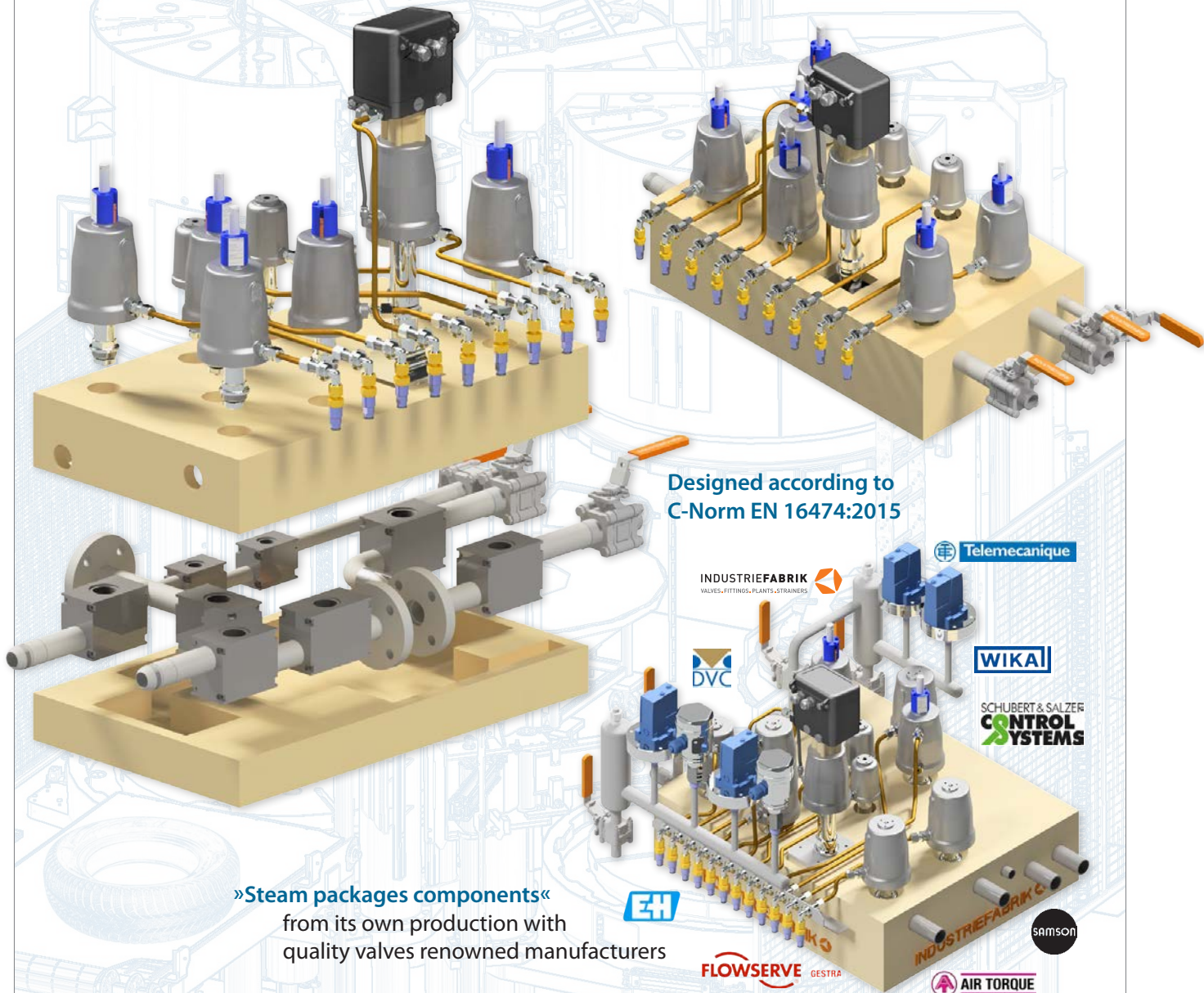
High efficiently temperature design

NEW

# »The new valve 82019« valve body with infinite possibilities

- » for steam packages in a compact design
- » high energy efficiency through box construction
- » short pipes – no insulation required
- » easy to replace valve body and fittings

<b>N. diameter:</b>	DN15 ... DN50
<b>N. pressure:</b>	PN10 ... PN40
<b>K<sub>vs</sub>-value:</b>	1.1...10
<b>Valve body:</b>	stainless steel
<b>Connection:</b>	welding ends, flange, screw threads
<b>Usage:</b>	control valve, check valve, stop valve, open / close valve, orifice, strainer



Designed according to  
C-Norm EN 16474:2015

»Steam packages components«  
from its own production with  
quality valves renowned manufacturers

INDUSTRIEFABRIK  
VALVES-FITTINGS-PLANTS-STRAINERS

DVC

EN

FLOWSERVE GESTRA

Telemecanique

WIKAI

SCHUBERT & SALZER  
CONTROL SYSTEMS

samson

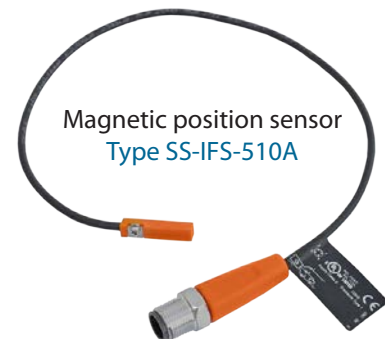
AIR TORQUE

## »Magnetic position sensor«

for angle seat valve Type 7010 in steam packages

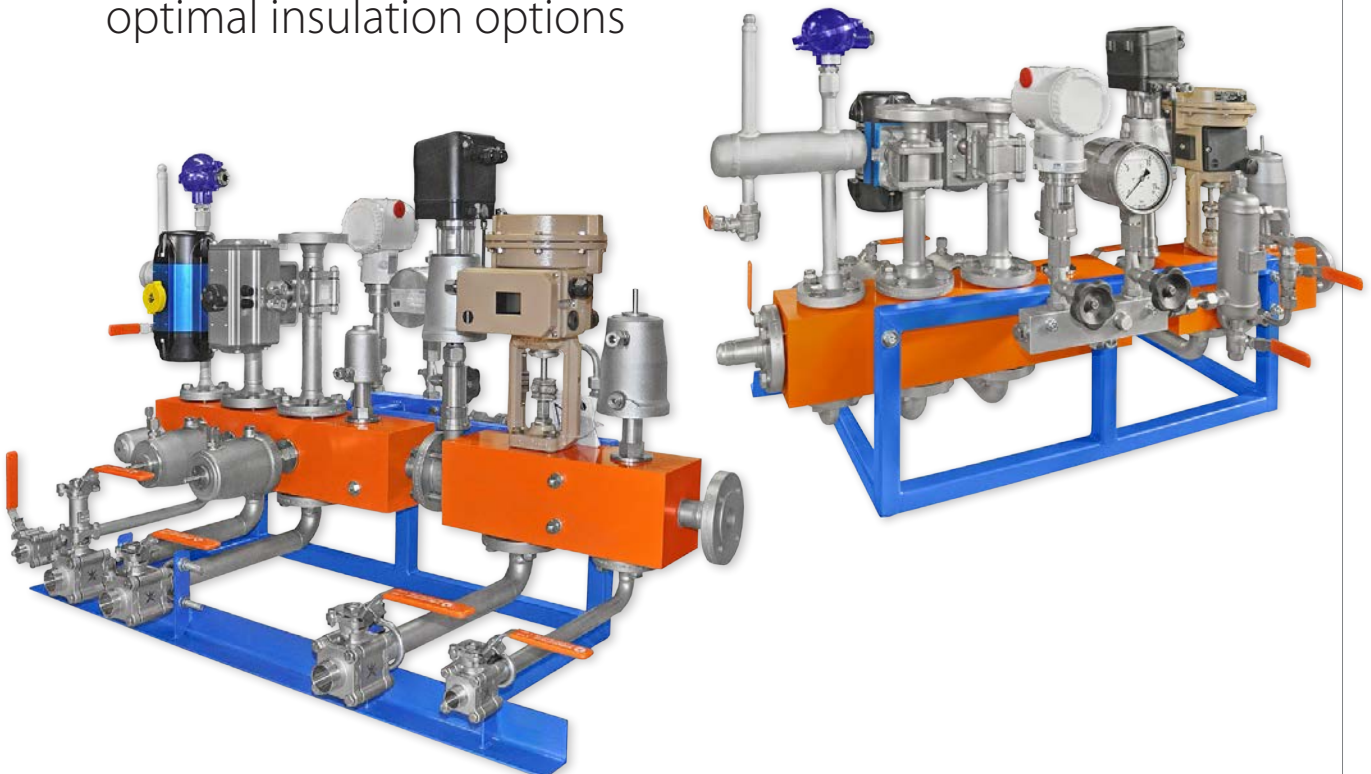
- » high protection rating for the requirements of harsh industrial environments
- » very high switching frequency
- » for applications in hazardous areas

Operating voltage [V]:	10...30 DC
Current consumption [mA]:	< 10
Protection class:	III
Protection:	IP 65; IP 67
Max. power-on delay time [ms]:	30
Electrical design:	PNP
Output function:	normally open
Switching frequency DC [Hz]:	10000
Magnetic sensitivity [mT]:	2.8
Material:	PA; stainless steel
Connection:	Cable: 0.3 m, PUR; Connector: 1 x M12; Locking: Hexagon nut, rotatable, stainless steel



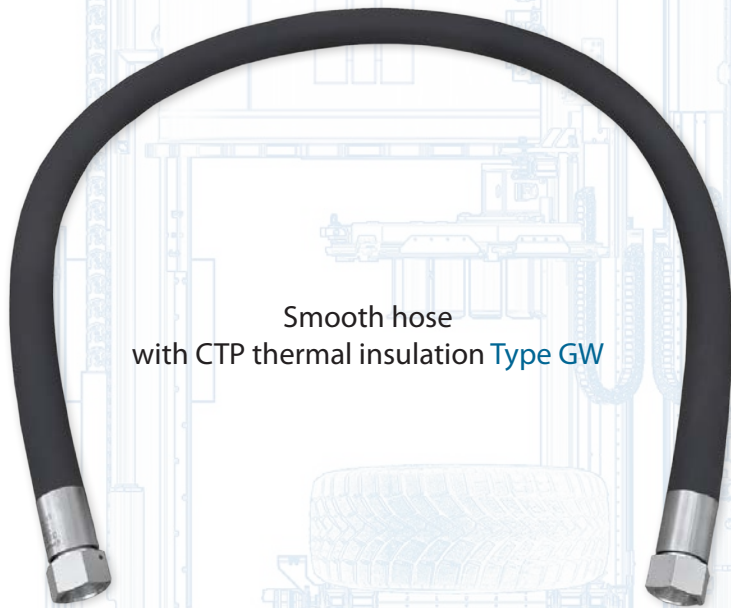
## »Steam packages in block construction«

for a compact design and more optimal insulation options



# »Flexible steam hoses« for tire curing presses

- N. diameter:** DN10 ... DN32
- Connection:** internal thread, conically sealing, UNF
- Approvals:** EN 10204 3.1 according PED 2014/68/EU



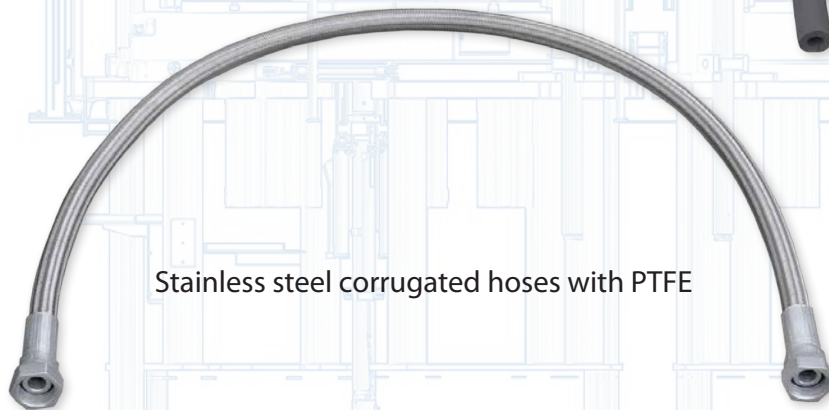
Smooth hose  
with CTP thermal insulation **Type GW**



Steam hose **Type PY**



Thermal insulation for  
corrugated hoses



Stainless steel corrugated hoses with PTFE

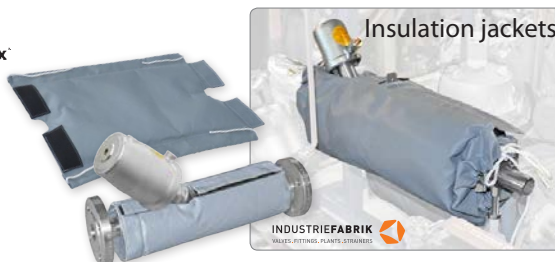


## »Thermal insulation« for valves and pipes

Pyro-silicon heat  
protection sleeve

marsoflex

CTP molded parts



Insulation jackets

INDUSTRIEFABRIK

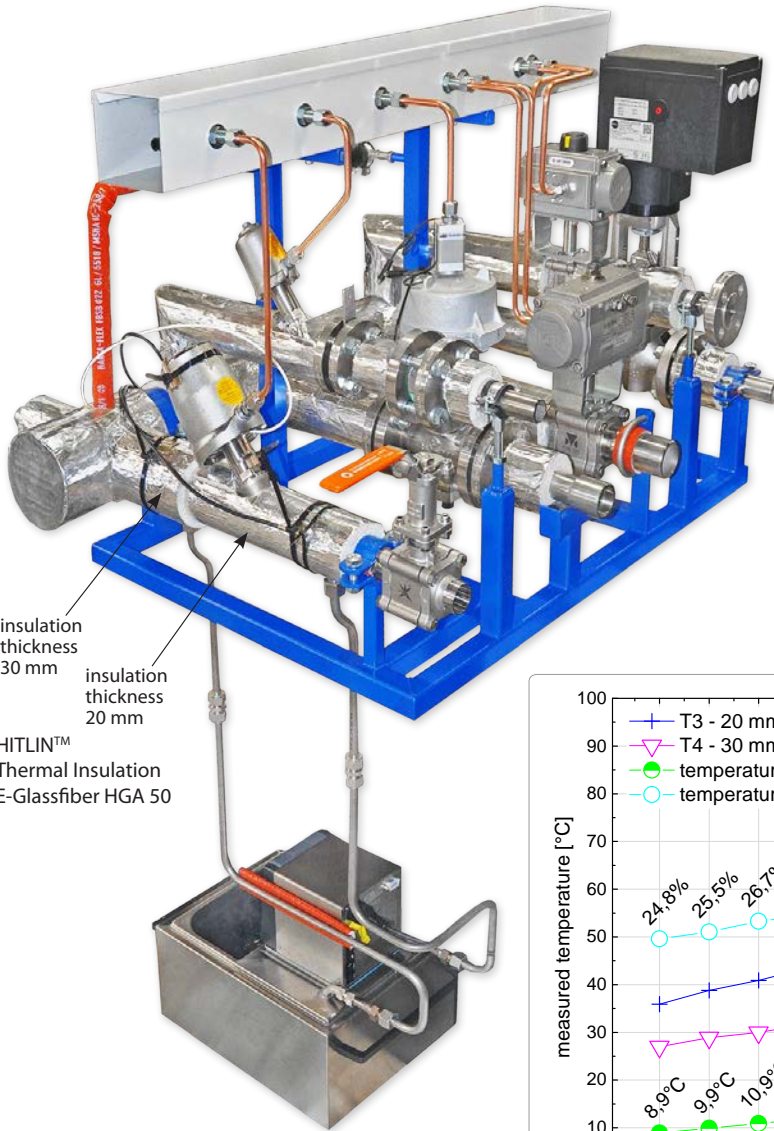
HITLIN™ High temperature  
E-glass fiber



HITLIN

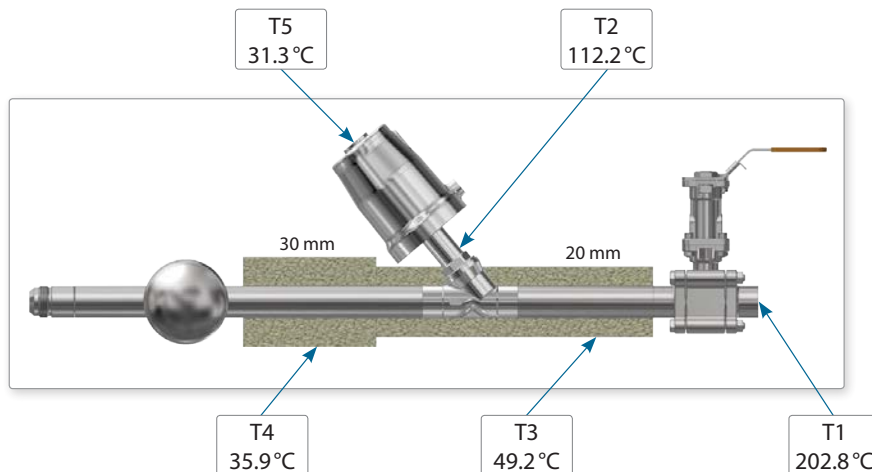
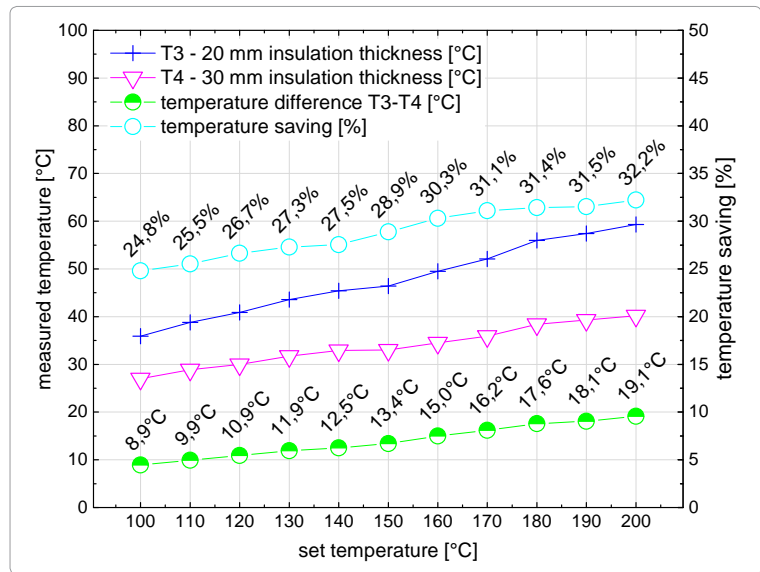
# »Pilot plant«

for measuring the energy efficiency of steam packages



## Advantages of thermal insulation

- » lowering the room temperature
- » reduction of energy costs
- » lower wear of valves and electronic components
- » saving of spare parts





# INDUSTRIEFABRIK

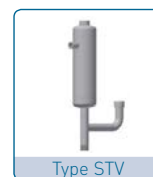
ARMATUREN.FILTER



Innovative and competent  
Optimal solutions for your success

Spare parts for Industrial plants, fittings and more  
can be found at [order.industriefabrik.com](http://order.industriefabrik.com)

- ❖ Actuator
- ❖ Angle seat valve
- ❖ Ball valve
- ❖ Control valve
- ❖ Insulation
- ❖ Non return valve
- ❖ Pressure switch
- ❖ Pressure transducer
- ❖ Steam traps
- ❖ Sight glass
- ❖ Sediment pot
- ❖ Thermometer
- ❖ and much more



## IFS Industriefabrik Schneider GmbH

Rosenweg 3 · 06780 Großzöberitz  
 Phone: +49 (0) 34956 / 3996-0  
 Fax: +49 (0) 34956 / 3996-66  
 E-Mail: [info@industriefabrik.com](mailto:info@industriefabrik.com)  
 Web: [www.industriefabrik.com](http://www.industriefabrik.com)

